

End-to-End

The Parish Magazine of Rivenhall and Silver End



Red Sails in the Sunset at Goldhanger.

August

2021

50p

The Following are our services For August 2021

1st August

9.30 am St Francis

11 am St Mary's

8th August

9.30 am St. Francis

11 am St Mary's

15th August

9.30 am St. Francis

11 am St Mary's

22nd August

9.30 am St. Francis

11 am St Mary's

29th August

9.30 am St. Francis

11 am St Mary's

9th Sunday of Trinity

Holy Communion

All Age Eucharist

10th Sunday of Trinity

Morning Prayer

Holy Communion

The Blessed Virgin Mary

Holy Communion

Matins

12th Sunday of Trinity

Morning Prayer

Holy Communion

12th Sunday of Trinity

Morning Prayer

Holy Communion

Church Contacts

Team Vicar Rev. Paulie Watkin

01376 583930 psgw100@aol.com

Churchwarden Ann Clarke

01376 514825

Churchwarden Peter Hope

01376 502605

Rivenhall Contact Carole McCarthy

01376 512781

Silver End Contact Ruth Aitken

01376 583846

Rivenhall Website

www.stmarysrivenhall.co.uk

St Francis Silver End Website

www.st-francis.org.uk/

Rivenhall Website

www.stmarysrivenhall.co.uk

St Francis Silver End Website

www.st-francis.org.uk/

Contact the Editor 07904 235101 or phope02@gmail.com

Thoughts for August from the Ministry Team

Like many people, I take great delight in feeding the wildlife which visits our garden. Many of our visitors are of course birds of various kinds, and the different varieties include blackbirds and other thrushes, robins, lots of magpies, the odd flock of seagulls, and woodpeckers to name but some. Not only is it good to be able to help feed the birds over the summer, in preparation for their time of much leaner pickings over the winter, (and I'm sure that some of our regular visitors have put on weight recently!). But it can be very entertaining as well. Especially when one of them flies off holding something which is probably too large to easily carry, but they do so anyway, being determined to keep hold of their prize.

I think that one of the reasons that birds are popular in the imagination of people is because they can represent a sense of freedom. The image of soaring on thermal currents in a blue sky can be a tantalising one. Though arguably the nearest that people can get to the same thing is either some sort of light aircraft, a microlite or paragliding – but even then *only* if one also has the courage and funds to do so! But thinking about the idea of freedom even further, it's true to say that our everyday freedom or civil liberty is also very precious indeed.

The freedom to be able choose one's own path in life, is one of the graces which God has bestowed upon us as human beings: Free-will. In the UK, and indeed in many other countries we are relatively fortunate. Aside from the laws stipulated by government, and the circumstances of which we find our selves in, we have (in theory) the freedom to live how we choose to – what we do with our lives, how we live in relation to God, one another, and the world around us. Of course this is actually an incredibly complex subject, and many people's circumstances in life can be very unfair indeed for all sorts of reasons.

But for those are are able to exercise greater personal choice, as the saying goes: "with freedom comes

responsibility". We therefore have a personal, as well as a corporate responsibility to one another and the world around us in terms of the choices which we make on a daily basis. Sometimes we will need to give consideration in how we respond to a specific situation which we find ourselves in, but very often we will make daily decisions in a more implicit way without necessarily thinking about it in too much detail; rather we will make a decision based more on what we 'feel' is the correct, kindest, or most considerate thing to do.

From an explicitly Christian point of view, we are called to ask ourselves if the choices which we make reflect the presence of God's love in our lives. Essentially asking if they resonate with the greatest commandments: *"One of the scribes came near and heard them disputing with one another, and seeing that Jesus answered them well, he asked him, 'Which commandment is the first of all?' Jesus answered, 'The first is, "Hear, O Israel: the Lord our God, the Lord is one; you shall love the Lord your God with all your heart, and with all your soul, and with all your mind, and with all your strength." The second is this, "You shall love your neighbour as yourself." There is no other commandment greater than these.'"* (Mark 12:28-31). These words of Jesus are familiar ones, but if we truly take them seriously will impact almost every aspect of our lives, and at times may even be challenging.

With the relaxation of national legal COVID rules since the 19th July, people have naturally been wondering how local churches will be moving forward with this over the months ahead. What might 'freedom' mean for us as a church community, whilst we also *all* play our part to keep one another safe? The Church of England, national church has advised parishes to be cautious in what changes they bring in, as well as how quickly, in order to minimise risk from Covid to everyone who visits our churches and takes part in worship. It is also of great importance that *everyone* who visits feels confident that they will be safe – especially those who are themselves, have people within their households, or

who have regular contact with others who are in the Clinically Extremely Vulnerable (CEV) group.

So as a parish we've decided for the moment to keep things almost as they have been during the more recent months of the pandemic. This decision was ratified at our most recent Parochial Church Council (PCC) meeting in July. This will however be kept under constant review at our future meetings; the next of which is due to take place in September, and with any changes only being made when it is felt safe to do so, and as directed by our diocese.

This includes taking into account safe church capacity to allow for social distancing – though with some possible flexibility for larger household groups or 'bubbles'. With the exception of anyone who has an exemption, **we're also asking people to continue to wear a mask or face covering whilst inside our church buildings,** (unless whilst reading or leading worship), and to use sanitizing hand gel. The choir at St Mary's Rivenhall will continue to sing from under the organ loft, being safely distanced from other people inside the building. The congregation can if they would like to, now to stand and sing hymns and during other parts of service, though whilst keeping their masks on in order to reduce the risk of the aerosol effect created whilst singing.

e are also keeping with Holy Communion being distributed in one kind only (the consecrated bread), or both kinds by way of intinction done by the priest. And finally to mention here, we will stay with visually sharing the peace by waving to one another, or by using sign language, rather than shaking one-another's hands or similar physical contact.

This is of course *not* the way that we would ideally like things to be, and we do hope that things can change more back to how we would all like them to be soon. But for the time being, please do bear with us as we all do our best to keep everyone else, and ourselves safe, along with the other people that we may live with.

Freedom to live our lives in the way in which we would like to is

indeed a very precious thing, but as mentioned a above with it comes responsibility. So let's all do the most responsible thing which can over the next few months ahead and beyond, and pray for a time when everything is back to how we would really like it to be.

Let us also pray for all people, whether in our own country or overseas, who for all sorts of reason have the freedom to live their lives in liberty curtailed. Let us also speak out and stand up against suffering, injustice, prejudice and discrimination in all it's forms, and pray for the day when the love of God's kingdom is fully realised across the whole world.

Rev. Paulie Watkin

Readings and Collects for August 2021

1st August 9th Sunday of Trinity

Readings

Exodus 16:2-4, 9-15

Ephesians 4:1-16

John 6:24-35

Collect

Gracious Father,
revive your Church in our day,
and make her holy, strong and faithful,
for your glory's sake
in Jesus Christ our Lord..

8th August 10th Sunday of Trinity

Readings

1 Kings 19:4-8

Ephesians 4:25-5:2

John 6:35, 41-51

Collect.

Creator God,
you made us all in your image:
may we discern you in all that we see,
and serve you in all that we do;
through Jesus Christ our Lord

15th August Festival of the Blessed Virgin Mary

Readings

1 Kings 19:4-8

Ephesians 4:25-5:2

John 6:35, 41-51

Collect

Almighty and everlasting God,
who stooped to raise fallen humanity
through the child-bearing of blessed Mary:
grant that we, who have seen your glory
revealed in our human nature
and your love made perfect in our weakness,
may daily be renewed in your image
and conformed to the pattern of your Son
Jesus Christ our Lord,
who is alive and reigns with you,
in the unity of the Holy Spirit,
one God, now and for ever.

22nd August 12th Sunday after Trinity

Readings

Joshua 24:1-2a, 14-18

Ephesians 6:10-20

John 6:56-69

Collect

God of constant mercy,
who sent your Son to save us:
remind us of your goodness,
increase your grace within us,
that our thankfulness may grow,
through Jesus Christ our Lord.

29th August 13th Sunday after Trinity

Readings

Deuteronomy 4:1-2, 6-9

James 1:17-27

Mark 7:1-8, 14-15, 21-23

Collect

Almighty God,
you search us and know us:
may we rely on you in strength
and rest on you in weakness,

now and in all our days;
through Jesus Christ our Lord.

The 50/50 Club July 2021 winners

1st C Macarthy 2nd S van Minnen 3rd Mr Bowsher

CREAM TEAS on THE GREEN at RIVENHALL

On Sunday the 8th August Rivenhall Millennium Committee are planning to hold its postponed cream tea event on Rivenhall village green to help raise funds.

The cream teas will be available from the exhibition trailer at a cost of £2.50 each and will consist of a scone, fresh clotted cream or butter, and an individual jar of Wilkin's of Tiptree Strawberry Jam served with tea or coffee. Additional cups of tea or coffee will be 50p and there will be an assortment of refreshments for children at 50p per item.

Hand sanitiser will be available at the trailer entrance. Face masks and gloves will be worn by those serving refreshments to ensure the utmost hygiene.

Jackie Allen will be entertaining us during the afternoon with her bagpipes.

We have tables and a limited number of chairs available, but please feel free to bring your own garden chairs or picnic rugs.

A raffle with the usual excellent prizes will be held, and the draw will take place around 5pm.

The event is from 3 pm onwards and we hope that you will join us, meet up with old friends and make new ones.

We look forward to seeing you there.

(Bob Turner - Rivenhall Millennium Committee)

RIVENHALL PARISH COUNCIL

NOTES OF MEETING HELD ON 6TH JULY 2021

These notes are an abridged version of the minutes

Present: Cllrs. Abbott, Wright, A'Lee, Cairns, Elliott, Prime and Turner.

Also present: Parish Clerk and ECC Cllr. R. Playle.

Public Forum

ECC Cllr. Playle introduced himself to the meeting and gave a brief report.

Concern was expressed by an RPC member on behalf of a resident regarding teachers at The Rickstones Academy smoking outside the Rickstones Road entrance and discarding the butts at the roadside. BDC will be asked if a suitable receptacle should be provided.

Matters for Discussion

Highways England A12 to A120 Widening consultation

Highways England public consultation events to be held on 8th July at the Rivenhall Hotel and 10th July at Spring Lodge Community Centre in Witham.

Members engaged in an in-depth discussion on various matters to be

raised with Highway England relative to the published consultation documents. The Chairman will draw together the main points of support for the A12 proposals and also the points of concern as well as questions on matters of uncertainty, so that a full and formal response can be made.

(Post meeting note: A number of RPC members attended the HE consultation event at the Rivenhall Hotel to ask questions of the HE reps present who were helpful and generous with their time).

BDC roadside verge maintenance & wildflower areas

The district-wide new verge policy is now in operation, with one cut per year to allow time for wildflowers to bloom and seed. The

Chairman reported that BDC will in due course invite all parish councils to suggest further enhancements, at which point the parish council could submit suggestions. The parish council had previously considered potential locations for enhancement along Oak Road, Rickstones Road, Church Road and Park Road.

Further wildflower areas could be considered on the Village Green. Members **agreed** the most suitable area would be between the trees near the junction of Rickstones Road and Church Road.

Apparent improper enclosure of Highway land – Rickstones Road

It was **agreed** that the Clerk write to the owner of a property on Rickstones Road requesting the removal of the green plastic fencing that appears to enclose both the ECC Highway verge and the RPC notice board.

Highway Maintenance

The speed of vehicles and increased HGV movements along Oak Road are to be again raised with Highways England and ECC.

All known outstanding highway defects have been reported to ECC for action.

Maintenance

ECC will be requested to enforce the cutting back of overgrowth of the footway along parts of Oak Road.

Planning Applications:

21/01998/SCR: Land West of Park Road – Solar Farm.

It was **agreed** to reply to BDC that this proposal should be subject to an Environmental Impact Assessment.

Planning Results:

21/00794/HH: Single-storey extension, the Ivy, The Drive, Rivenhall End.

BDC has granted this application.

21/01203/HH: First-floor side extension, 16 Foxden, Rivenhall

End.

BDC has granted this application.

BDC Local Plan

Based on the draft timetable, the Rivenhall Green Buffer policy was due to be discussed at the Examination on 14th July. The Chairman had requested to speak as a BDC councillor and the programme officer had acknowledged that request.

(Post meeting note: The Chairman attended the Examination and spoke in favour of the Rivenhall Green Buffer policy. He requested that the Inspector recommends extending the Rivenhall Green Buffer to cover all the land up to the Rectory Lane area so that no gap is left. A representative of a local landowner called for the entire Green Buffer to be deleted so that further development between Witham and Rivenhall End would not be prevented by the policy).

Rivenhall Airfield waste Site

The Chairman reported from the Waste Site Liaison meeting held via video conferencing on 17th June 2021:

Work is underway in the Woodhouse Farm area to uncover buildings.

PRoW Kelvedon F8 is now protected by fencing through the site. Indaver confirm that they will apply to divert F8 – they say on a temporary basis.

Indaver say they may not now refurbish Woodhouse Farm for their offices and may use other buildings on site instead.

More planning applications are to follow.

Civil works on the main waste site footprint are expected to start early in 2022 after soil removal and a temporary access road is constructed from the Bradwell quarry processing area (i.e. a total route to/from the A120) in late 2021.

Applications are to be made to ECC to change the dates for works on the site.

The Environmental Permit has been transferred from Gent

Fairhead to Indaver by the EA.

A key issue, confirmed again at meeting, is that Indaver and Gent Fairhead are NOT going to build what they have planning permission for, but will not say what they will build, other than the incinerator part of the plant and the shell of the structure overall by 2025. Gent Fairhead repeated as per the previous liaison meeting that the paper recycling mill element will NOT be built as it has "no commercial viability". Without the mill, the plant overall cannot be a Combined Heat and Power (CHP) plant and will not be built as per the planning permission.

Indaver and Gent Fairhead say they are looking for an alternative user of heat, steam and electricity from the incinerator "on or off site" but did not say what or where that might be.

ECC officers insisted that Indaver/Gent Fairhead must build what they have planning permission for, but did not reply when asked about legal advice they said at the previous liaison meeting they were seeking – to clarify whether Indaver can start building the plant when it is known they will not built to the consent.

Information exchange and items for the July agenda

The Three Parishes Meeting to be held at Silver End has again been deferred.

Dates of future meetings

3rd August at Rivenhall Village Hall, and 7th September at Henry Dixon Hall, both meetings starting at 7.30 pm.

Sky Notes August 2021

Jupiter and Saturn reach Opposition this month – literally meaning they are opposite the Sun in the sky. Saturn does so first on 2nd August followed by Jupiter on 20th August. The pair of planets can be seen in the South East at 11pm, quite low down. The Full Moon passes below Jupiter on the night of 21st/22nd August.

Jupiter is much the brighter of the 2 planets and a small telescope or a good pair of binoculars will reveal the 4 large Jovian moons in orbit around the gas giant. Advanced amateur astronomers can now image surface details on Jupiter's moons which would have been inconceivable even a few decades ago.

The annual Perseid meteor shower will peak on the night of 12th/13th August. This year the Moon does not interfere much – on maximum night it sets at 10.15pm BST, leaving the rest of the evening and night relatively dark as twilight also ends soon after that.

The Perseid meteors appear to radiate from a point just to the left of the W shape of the constellation Cassiopeia, which can be found half way up the sky in the East in the hour before midnight.

All-night summer twilight ended in late July and in the Moon-free late evenings of the first 2 weeks of August, the Milky Way is ideally placed for viewing, streaming down from overhead to the South. It is the most readily visible part of our galaxy, about which we still have much to learn simply because being inside it, our view is very limited. It is believed to be a class of galaxy termed a 'barred spiral' and the best estimate of the number of stars in our galaxy is somewhere between 100 billion and 200 billion.

Sky Watcher

Dips for picnics

Avocado Dip

- 1 avocado – remove the skin and stone
- 1 tsp dried Chives
- The juice of half a lemon
- Salt and pepper
- Half cup plain yoghurt
- 2 tablespoons semi skimmed milk

Mash the avocado and mix in all the other ingredients.

Delicious on toast, oat biscuits, crackers or as a dip for raw veg.

Smoked Mackerel Pate

- 95 g smoked Mackerel
- Half tablespoon Lemon Juice
- Half tablespoon Cream cheese
- 1 tablespoon Sour Cream
- Black pepper and cayenne pepper to taste.
- Crush the fish with a fork and add other ingredients,
My Favourite, use as above!

Houmous

- 200 grams chickpeas drained, but save a little juice
- 2 tablespoons lemon juice
- 1 tablespoon tahini – (Or Peanut Butter, or Sesame seeds or sesame Oil)
- 1 chopped clove of garlic
- Half teaspoon salt
- Black pepper to taste
- 1 tablespoon olive oil

Put all in a blender except last two. Blend – then tip in a bowl

And add pepper and olive oil. Serve as above



CONNECTED CABS WITHAM

01376 317777



Wheelchair Accessible

All fares fixed price (no meters)

Card payments accepted in cars



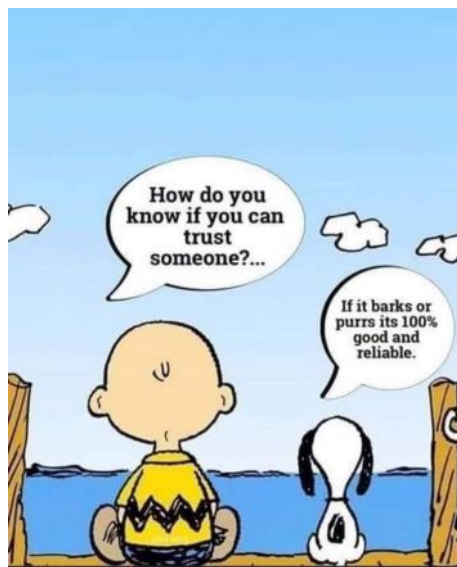
Prices from Witham:-

Hospitals

Broomfield	£22
Colchester General	£25
Springfield	£18
St Peters/ Braintree	
Community	£15
Maldon	£15

Airports

Stansted	£40
Heathrow all Terminals	£96
Gatwick	£95
London City	£75
Southend	£50
Loton	£95



Aerial Photography

Barns

Chimneys

Roof Tops

COST EFFECTIVE, SAFE ACCESS,
ROOF TOP INSPECTIONS BY
DRONE WITH NO NEED FOR
SCAFFOLD, TEMPORARY WORK
OR STRUCTURES REQUIRED.

NON DISRUPTIVE, FAST AND
PROFESSIONAL SERVICE, SAME
DAY REPORTS AND
RECOMMENDATIONS FOR
REPAIRS

FULLY CAA AND CIOB
REGISTERED, QUALIFIED AND
INSURED SERVICE. CARRIED OUT
BY EXPERIENCED SURVEYORS.

Call to discuss your requirements;
Chris; 07817219133
Jim; 07966403783
email; highsightse@gmail.com

Historic Buildings Monitoring

Building Inspections

Estate Records

ANGLIA TREE SERVICES

Specialist tree surgery

Residential & Commercial Customers

CROWN REDUCTION • FELLING • TOPPING

HEDGE TRIMMING • ALL GARDEN WORK

STUMP GRINDING

For a quick, tidy and friendly service call:

Tel: 01621 892831



7 DAYS A WEEK • EMERGENCY SERVICE AVAILABLE • FULLY INSURED



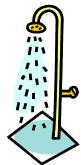
Philip Little

Property Maintenance Magician

Local service at local prices

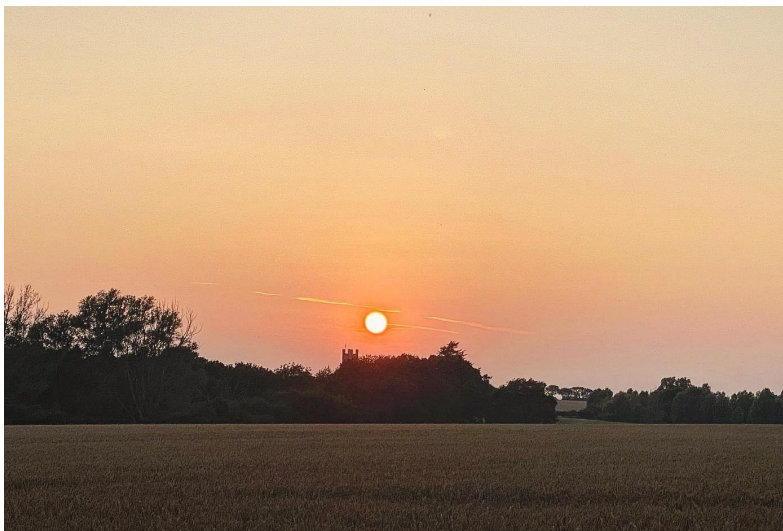
Knowledgeable and friendly

07973 129808 or 01376 515257





A Picture of Flatford Mill
complete with a "photo bombing pigeon".
and a sunset over St Mary's Rivenhall

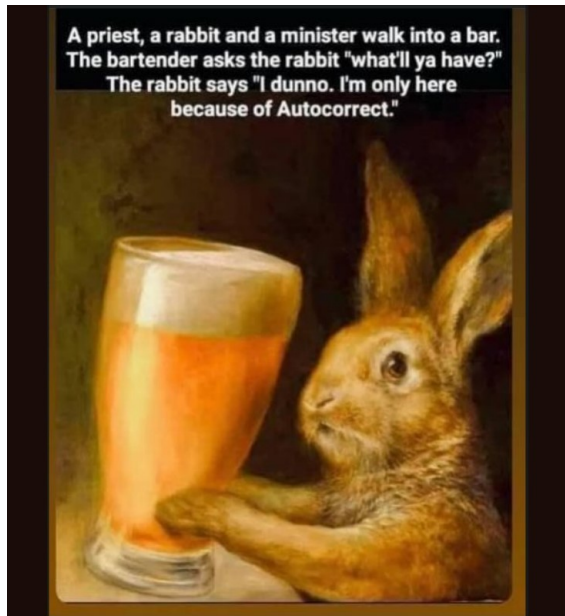




Many thanks to Jane McCrae who sent this detailed map of the proposed work around Rivenhall following the construction of the Widened A12. The key to this plan is the construction of a Roundabout on the existing A12 between Whiteland's and what used to be the Rivenhall Fox. There is a loop road from the existing Henry Dixon Rd to a new road to be constructed behind the Matchyns Office Complex. Henry Dixon road will connect to this new road which will carry traffic to Braxted and Tiptree. This road will go over the newly constructed A12. This work will have to be completed before the new A12 is constructed as the New A12 will bisect the current Braxted / Tiptree road. An interesting feature is that Oak Road will be closed off by the Fox and Access to Rivenhall and Silver End will only be via



the new link road and Henry Dixon Road. It is also proposed that there will be Pedestrian crossing lights in the vicinity of Oak Road and that the Bus stops there will be re-instated. What this means is that traffic between Witham and Kelvedon will pass along the old A12 through Rivenhall via a newly constructed road section to the north of the New / Widened A12 opposite the Fire Headquarters. All Rivenhall traffic heading to the A12 will have to use the old A12 via Henry Dixon to access the new always junction at Witham North. The only thing I can comment on is that some small pockets of land behind Matchyns and and to the East of Henry Dixon may be ripe for small housing developments?



This is One for all you ardent text messengers.



So is this another Harbinger of Climate Change

Serving the Local Community for over 125 Years

G. COLLINS & SONS

Funeral Directors Ltd



30 RAYNE ROAD, BRAINTREE, CM7 2QH

01376 342266

4 THE STREET, WHITE NOTLEY, CM8 1RH

01376 583750

WWW.GCSFD.CO.UK

Beautiful Rooms For Rent In Witham & Braintree

We have 4 Lovely houses
2 in Witham—2 in Braintree
With and Without en-suites
£90—£130 per Week

(All inclusive of Rates, Light, Heat, and with Broadband)

See our Website:- www.jbwpartners.co.uk

Or Call

John
07850 161629

Mavis
07714 579783

Michelle
07966 323914

**HELP WITH
FUNERAL ARRANGEMENTS
RICHARDS
FUNERAL SERVICE**



01376 513114

78 Newland Street, Witham, CM8 1AH

From advice on how to register a death to making all the arrangements, we're here 24 hours a day.

Members of the National Association of Funeral Directors
A British Owned Company www.dignityfuneral.co.uk

SpeedyBroadband.co.uk

***Sick Computers my
Speciality***

- Home Networking Problems Sorted Out
- Computer Viruses Removed
- Operating System Upgrades
- Upgrade to Windows 10

FOR YOUR FREE SURVEY AND
QUOTATION CONTACT

Peter Hope

peterhope@speedybroadband.co.uk

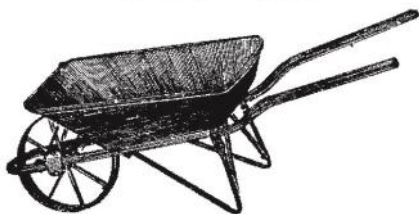
Tel: 01376 502605

Mob: 07904 235101

Website

www.speedybroadband.co.uk

**Ya Garden
Cares**



**Thorough Attention on
Bed Maintenance,
Mowing & Clearance**

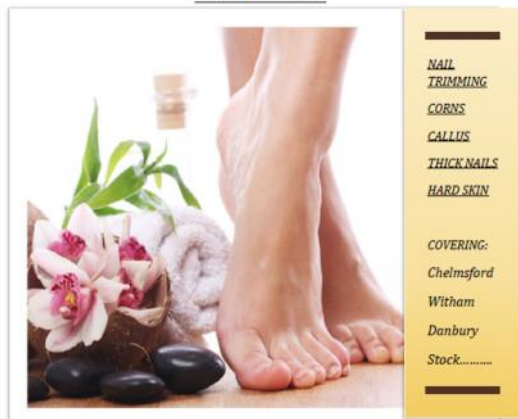
**Telephone
Barry: 07732337626**

FOOT HEALTH PRACTITIONER



THE SMAE INSTITUTE

HOME VISITS



NAIL TRIMMING

CORNS

CALLUS

THICK NAILS

HARD SKIN

COVERING:

Chelmsford

Witham

Danbury

Stock.....

JAMES NEWMAN (MCFHP,MAFHP)

TELEPHONE: 01376 519036

MOBILE: 07793971351



**CARING FOR THE PETS OF WITHAM AND
THE SURROUNDING AREA FOR 25 YEARS**

SPECIAL O.A.P. SURGERY THURSDAYS

CAT ONLY CLINIC WEDNESDAYS

Late night surgery Wednesday till 8pm

**Surgery Opening hours
Monday to Saturday for appointments**

Tel: 01376 500038

www.brookendvets.co.uk



PC Doctor
Operations Limited

**For all your computer
requirements including:**

Virus prevention, detection & removal
Broadband, Networking, Wireless & Firewall set up
Email & SPAM filtering
Hardware Repairs & Upgrades
Software Faults & Crashes
Backup Solutions & Data Recovery
Software Installation & Removal
Hardware & Software Supplied
Website Management • Computer Training

**Health
Checks
£39.99**

Office: 01621 891064 • Mobile: 07990 565336

Email: support@pcdocops.co.uk

Website: www.pcdocops.co.uk

Monthly subscription service available to provide complete "peace of mind" and allow you to spread the cost of your IT requirements.

Please contact for further information.

REYNOLDS CARPENTRY SERVICES

**For all Carpentry, Joinery
& Cabinet Making Requirements**

CSCS Registered

30 Years Experience

4 Years Apprenticeship

City & Guilds and

Advanced City & Guilds Qualified

Free estimates – No obligation

All building work considered

Can also make items to order

also

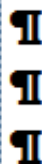
**'curtain poles, tiling, flat packs,
kitchens, doors, sheds etc, no jobs
too small'**

Contact

07889 110962

Answer phone at other times

Jeremy Larke Television services



Telephone: 01376 513645

Mobile: 07947 601619

Email: telerepair@aol.com

All Television Systems Catered
for Freesat, Freeview, Sky.

- Installations & Repairs To all makes and models
- Full Plasma & LCD Fitting Service
- Wall Mount Brackets Supplied and Fitted
- Aerial & Satellite Dishes Fitted
- Freeview, Freesat & European Channels
- View and Control Your Sky in Other Rooms
- Aerial and Telephone Extension Points Installed



Don't Delay Call Today

Janet C Davies

Dip. F.D. M.B.I.F.D

**BRAINTREE & KELEVEDON'S LADY FUNERAL
DIRECTOR**

Offering a full and Comprehensive Funeral Service

Telephone 01376 339300

For a Personal and Caring 24 hour service

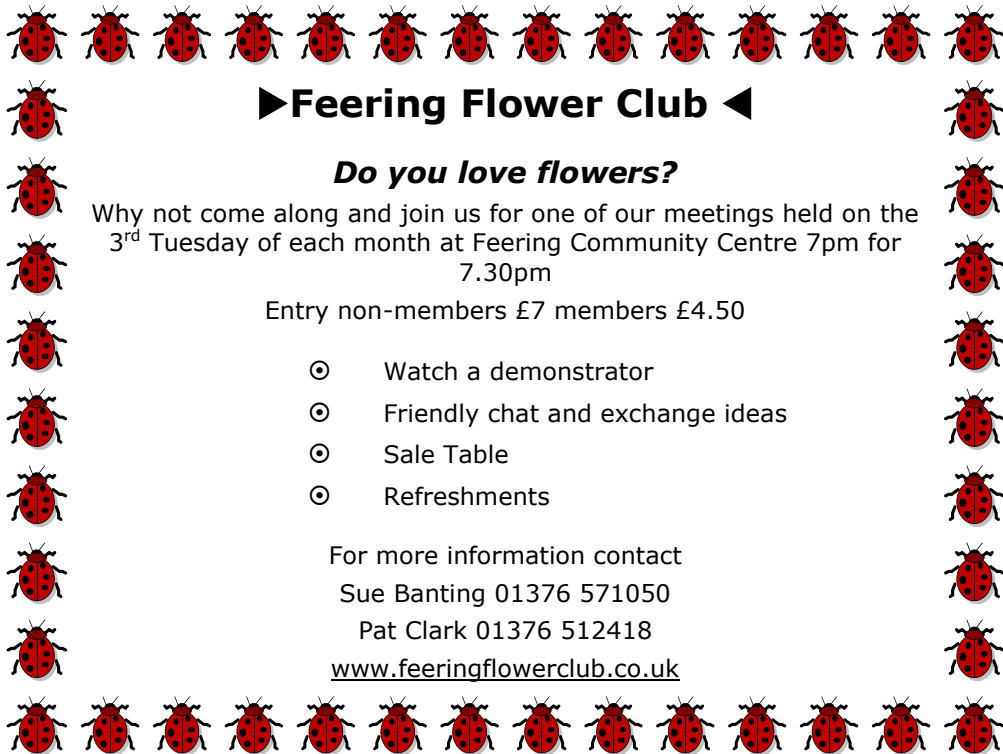
Local Chapel of Rest at Fern House 72 Coggeshall Road Braintree and
Victoria House, Trews Gardens, Kelvedon

Funerals are arranged and carried out in the Traditional Manner but
With 'The Gentle Touch'

Pre payment Plans available—Floral Tributes arranges—Woodland Burials
Bereavement Care—Low Cost Simplicity Funerals - Memorials—Printing
Catering—DWP Funerals

Part of the Hunnaball Family Group

Members of the National Association of Funeral Directors



►Feering Flower Club ◀

Do you love flowers?

Why not come along and join us for one of our meetings held on the 3rd Tuesday of each month at Feering Community Centre 7pm for 7.30pm

Entry non-members £7 members £4.50

- ⊙ Watch a demonstrator
- ⊙ Friendly chat and exchange ideas
- ⊙ Sale Table
- ⊙ Refreshments

For more information contact

Sue Banting 01376 571050

Pat Clark 01376 512418

www.feeringflowerclub.co.uk

DANIEL ROBINSON & SONS

Incorporating
W C BROWN & SONS

Independent Family Funeral Directors & Monumental Masons

A professional, caring, 24 hour service

Private Chapel of Rest

Fleet of air conditioned limousines

Horse drawn funerals available

Traditional and contemporary funeral services to suit your wishes

Funeral pre-payment plans

Arrangements may be made in the comfort of your own home, if preferred

Haslers Lane
Great Dunmow
Tel: (01371) 874518

7 Manor Street
Braintree
Tel: (01376) 320582

31 High Street
Halstead
Tel: (01787) 475533

www.drobinson.co.uk

Turning the pages of History

Research by Tracy Scott

Turning the pages of History

Research by Tracy Scott

Last month we were looking back 60 years with the Rivenhall Review and I thought we would carry on with that issue this month with the centre piece of July 1961.

Comparisons

by Deirdre Succamore

The other night I called on Mr W. Cutts and his wife at No. 5 Church Road, Rivenhall. Without giving too much away I'll just say that Mr Cutts is an old age pensioner and leave it at that. He was born in Rivenhall and has lived here all his life so he was just the one to tell me quite a lot about life in Rivenhall when he was a 'teenager'. On the whole I think I'm glad to be a teenager in 1961 rather than in, say, 1911!

Mr Cutts was born in a house built in 1793 beside the London Road on the Kelvedon side of the bridge. The rent for the house was £9.12.0 per annum, perhaps the average monthly rent for the present day. He and his wife both attended the village school (without any idea that one day they would be happily married!). In those days all children walked to school. This bears no real significance until we realise that the Silver End children had to come to Rivenhall for their education and this meant that some of them walked three miles, morning and night. (I should think modern school children would collapse at the thought).

When Mr Cutts was a pupil at the school Mr Pratchett was the Headmaster. All scholars used slates for writing etc., and a cane was kept ready for those who misbehaved. There were approximately 120 children attend the school and it must be borne in mind that at that time there was no estate and neither were there two rows of council houses in Rickstones Road. People had much larger families then. In fact Mr Cutts told me he was one of a family of eight.

Mr Willmott was the Rector of Rivenhall when Mr Cutts was a young lad and, at the age of 13, the latter sang in the church choir. There were then 18 men and boys in the choir and at the end of each month the boys were rewarded with a shilling each. However, if a misguided boy absented himself from either a morning or evening service during the month, 6d was deducted from his shilling. The organ was situated between the choir stalls and the alter rails then and I expect many of the older Rivenhall church-goers can remember it being moved to its present place at the back of the church. At the age of 13 school finished for Mr Cutts and he started work at Hoo Hall farm for the princely sum of three shillings a week – working day meant 6am to 5.30pm – quite a day for a boy of 13!

If mother was really well off one week, she could take a trip into Witham for two penny fare. Bill, Basil and Horace Moore (ancestors of Moore Brothers now at Rosslyn Garage, Kelvedon) used to run a yellow covered-in van, pulled by two horses and they also acted as carriers; Mr Cutts can remember the van delivering the groceries once a week. The van would go to the International Stores at Witham and collect in the order and deliver a huge parcel of groceries, neatly tied with brown paper and string. Of course if you wanted to walk to Witham along the London Road you always walked in the middle – imagine that now! The sight of a car was a rare event and even bicycles were scarce.

Besides the groceries, the baker came three times a week to deliver the bread. Mrs Cutts was a customer of the Witham baker, Mr Norris. The family fetched their own milk from the farm for a penny a pint. If mother wanted to make “a rare big rice pudding” (and it must have been big for ten of them) she sent one of the children to the farm for a pennyworth of skimmed milk. She might also buy some eggs at the same time. If the hens were laying well she would receive 18 for a shilling but when eggs were scarce the price rose to eight for a shilling. Other prices at that time were:

Beer – two pence, two pence halfpenny or three pence a pint according to quality, Woodbines – a penny a packet and Players three pence a packet. If a child had a farthing to spend he could always call at the Workmen's Hall and buy a bag of sweets from Mrs O'Shea's shop.

The other shop in the village "The Oak" was owned by Mrs Uriah Shelley and, in addition to groceries, sold garden tools and coal from the yard outside at eight shillings a ton.

I think we could have talked all night about the "good old days" but I felt I really must let Mr and Mrs Cutts have their supper, so, after thanking them, I went home – thankful that I am a 'teenage' in 1961 and not 1911!

This is a great report of life and how Rivenhall and the End has changed and of course is still changing as years go on.

The Succamore family name has been in here since at least 1700's and descents still do. Deirdre would have been known to many of us and lived her younger life in one of those council houses in Rickstones Road that she mentioned. I remember her helping Faith Murton at the Sunday school that was held at the Village Hall (then Church Hall) before it was moved to the church when the vestry was built.

Deirdre married Brian Loxley in 1972 and moved to Braintree, then the family in 1988 moved to Heacham, Norfolk where she attended St. Mary's church there. In 1996 she was ordained and the Rev. Dee Loxley served St. Marys at Heacham until with her husband Brian moved to Goldsborough, near Harrogate, Yorkshire in 2005 to a small village church St. Mary the Virgin until 2008, when they returned to Norfolk and Swaffham where in 2014 after a long battle with Ovarian cancer died on the 8th August aged 73.

Deirdre didn't mention the age of Willie Cutts so for the record he was born in 1892. On the 1901 census he was 9 the family was living Hoo Hall Cottage on London Road (The house was part of the Hoo Hall estate at that time and this would be going toward Kelvedon not far from where the Pulse & Cocktails shop is now) with parents George born in

Rivenhall 1850 and Phoebe of Langford born 1854 – siblings: Amy, Charles, Fredrick, George, Hugh and Mark. In 1911 they had moved to Browns Row where we find Phoebe is now a widow and Charles is the head of the family aged 26. Willie aged 19 and brothers Fredrick 15 and Mark 13 are still also living at home.

021 Summertime Home Security Advice

With the removal of most Covid19 restrictions and as we start to spread our wings a little don't get complacent with your home security, unfortunately there are those that will take advantage of this newfound freedom to seek opportunities to commit crime.

Even if you are at home, home working or enjoying a 'staycation' still consider your home security for as it gets warmer, we get to see a rise in the number of "Creepers Burglaries" where burglars take advantage of open gates, windows and doors. An open or insecure garden gate will provide the thief with access to the back of your home.

Before going out or turning in for the night don't forget to check all doors and windows, someone may have closed it, but did they lock it?

A few tips for keeping your home secure:

Don't attract a thief with insecure pedal cycles or cars or gates on display.

Keep side or rear gates, sheds and garages shut and securely locked.

Doors - Leave any accessible external door open or insecure and an opportunist thief could pop in and anything lying around would be gone. You may have only popped out, or down the end of the garden or having a quick shower; it only takes a second for a thief to steal. Don't forget that with a PVCu multi-locking door you may have lifted the handle but until you turn the key (or on some doors a thumb turn on the inside) you have not locked all of the locking bolts in place.

Windows - If you have unoccupied rooms that are accessible to others from outside or off flat roofs make sure the windows are closed, if you need ventilation in

these rooms whilst at home at least lock the larger window and only have the small window open even during the daytime. If you only have bigger opening windows, consider a lockable window restrictor and a small alarm sensor on the window to detect entry. Before going out or 'turning in for the night' lift the blinds or open the curtains and check windows and patio doors are closed, the sun may have been on the TV when it was hot, and so the curtains were drawn whilst the window was open.

If you have an intruder alarm activate it when going out and activate the zone for any unoccupied areas whilst in.

Car keys - **don't** take them to bed with you, where possible leave them in noisy drawer/location. Keep the keyless car fobs in a "Faraday" bag.

If you do hear a suspicious noise in the house that you are not happy with dial 999 and make a noise, shout out, it could cause any intruder to flee, they may not have known you were home, remember your life is more important than your property. If safe to do so, get a good description of the person/s and if possible the car index number and direction of travel.

Make sure in case of fire that keys to windows and doors are readily accessible to occupants at all times but not in view of possible burglars.

For further crime prevention advice see:

www.essex.police.uk/cp/crime-prevention/ or
www.securedbydesign.com/guidance/crime-prevention-advice/ensure-your-home-is-secure

GET VACCINATED!!

Please if you haven't already get you 1st and second dose of the vaccine or if there are people in your family who think it is not for them here is a sobering chart that demonstrates why you need to do this:-

A California man who mocked Covid-19 vaccines on social media has died after a month-long battle with the virus.

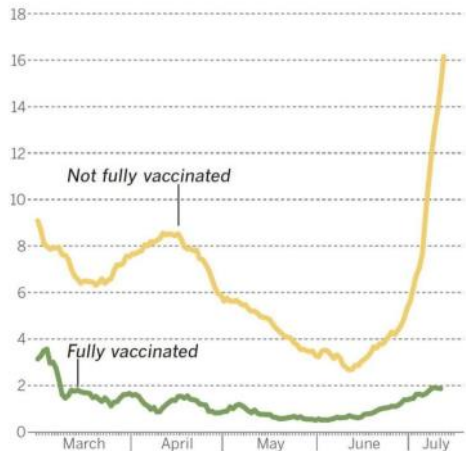
Stephen Harmon, a member of the Hillsong megachurch, had been a vocal opponent of vaccines, making a series of jokes about not having the vaccine.

"Got 99 problems but a vax ain't one," the 34-year-old tweeted to his 7,000 followers in June.

This story is repeated time and again.

Coronavirus infections after vaccination

Seven-day rolling average of cases per 100,000 residents, March 1 through July 12, 2021.



MICHELLE GILCHRIST U-T

End to End Nature Care.

Spending lots of time in the garden recently I have been struck by the variety and character of the calls of a particular bird species. Blackbird? Song Thrush? One of the warblers perhaps? No, it was the Magpie.

As a member of the crow family (Corvidae), Magpies are rather maligned birds, thought of as little more than scavengers, sometimes thieves, often predators of other birds' nests and even, by those of a superstitious nature, symbols of bad fortune. The name is often linked with other things of a pied colouration - Newcastle United football club, who play in a black and white strip, are known as The Magpies - but if you see a Magpie close up you will notice that to describe its plumage as black and white is to do it a disservice. The white is not pure - they rarely are - and can be almost ivory whereas there is little true black present at all, the darker colours being an iridescent mixture of purple, green and blue, almost like black mother of pearl. Their tails

are different too, not squared off or forked like so many birds but instead long and diamond shaped.

Their vocalisations are very varied and while not tuneful they are certainly full of expression and one a warm, sunny day can make you feel like you are somewhere other than the UK. The Australian Magpie, a physically not dissimilar bird from “down-under”, has a somewhat more melodic call, also rather evocative. The two species are, however, unrelated with the Australian bird not a Corvid at all; it is merely an example of “convergent evolution”.

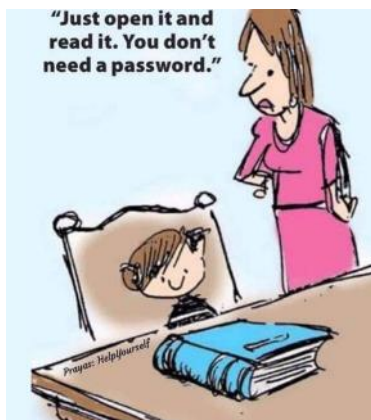
The UK species extends across the continent and is correctly known as the Eurasian Magpie with the Latin name *Pica pica*. Some mothers may be familiar with the term “pica” as it is also the name for the medical condition where somebody (often a child or a pregnant woman) develops the habit of eating things not usually considered as food. Magpies are omnivorous and opportunistic but also intelligent and curious. This curiosity led to the folklore of their being thieves with a penchant for adorning their nests with shiny items such as jewellery, a behaviour reinforced by numerous literary references but since proved to be a myth. Studies on their intelligence have shown Magpies to be curious of previously unseen objects but with no habit of removing them. They are capable of remembering where they have hoarded food, to make and use tools, to act cooperatively, and are one of the few animals demonstrated to be able to recognise their own reflection. They used to be kept as pets and could be taught to impersonate sounds, even speech, and to play simple games; all very impressive.

There is a mass of superstition around the species, dating back for centuries, most of it bad and presumably based on their looks and sometimes aggressive behaviour. Many people even today consider seeing a single Magpie as unlucky and there is a tradition of saluting the bird or wishing it a good morning. Personally I would salute it simply for being such a fascinating creature.

Our group's weekly Wednesday evening activities continue throughout August and into the start of September. Details are listed below, with any last-minute changes advertised on our website <http://www.e2e.silverend.org> and Facebook group www.facebook.com/groups/767416983842784. If you would like to join in then please feel free to just turn up on the night. Equally, if you have found an insect or indeed any invertebrate and would like to know more about exactly what it might be then please post in the Facebook group or contact me on simon@e2e.silverend.org or 07947 388180.

Simon Taylor

04 August 2021	19:00	Ambling in White Notley. Meet near the bridge/ford on Station Road, White Notley (TL787184).
11 August 2021	19:00	Aquatic surveying in the River Blackwater at Brockwell Meadow, Kelvedon. Meet at Teal Way, Kelvedon (CO5 9PP or TL865186).
18 August 2021	19:00	Ambling at Rivenhall Airfield. Meet on the lane by Allshots industrial park (TL830200)
25 August 2021	19:00	Tree fruits and molluscs/invertebrates, Tarecroft Wood, plus crepuscular signs as dusk falls. Meet in the parking area at the bottom of the track to the Wood (TL824171).
01 September 2021	19:00	Late summer plant and invertebrate surveying at Silver End Pits. Meet in Western Arms car park (CM8 3SD or TL813193). We may visit the pub afterwards.



Organisations in Rivenhall

Clerk to Parish Council	Keith Taylor	516975
Email parishclerk@rivenhallparishcouncil.net	meets every first Tuesday	
End to End Nature Care	Simon Taylor	01621 810141
Gardening Club	Carole McCarthy	512781
Meets on 2nd Tuesday at 7.30pm in Village Hall		
Carpet Bowls	Mick Marshall	512836
Meets every Thursday at 7.30pm in Village Hall		
Playing Fields Association	Mick Marshall	01376 512836
Spread Your Wings Dance Acam	Laura Pearson	01376 741317

Facilities

Hire of Village Hall	Pauline Marshall	01376 512836
Or email rivenhallvillagehall@gmail.com		
Hire of Henry Dixon Hall	Tracy Scott	571551
Oak Store Rivenhall "Open All Hour" Tel AJ		01376 538838

Organisations in Silver End

Clerk to Parish Council	Mrs B. M. Temple	618464
Email parishclerk@silverendparishcouncil.gov.uk		
Bowls Club	Paul Mann	07551 006906
Children's Centre	Faye Savage	587960
Neighbourhood Police	Braintree Policing Dial 101	
Congregational Church	Sharon Gray	583913
Friendship Club	Maureen Green	585275
Silver End Gad Abouts	Denise Sullens Smith	07952 992782
Gardening Club	Liz Woor	585586
Guiding Group	Carol Hutchings	07857 663959
Neighbourhood Watch	Judy Hill	07896 975839
Scouting Group	Denise Sullens Smith	07952 992782
St Mary's Church (R.C.)	Vivian Phillips	583598
Tennis Club	Jason Cairns	584581
Workers Educational Assoc.	Brian Gillion	583706
Luncheon Club	Helen Thomson	583255
Doctors Surgery		583387
Silver End Heritage Society	Jackie Nesbitt	07707 084608
Silver End United Football Club	Mark Edgell	584639 Web
Site www.silverendunitedfc.co.uk		
Women's Institute	Brenda Warnes	07931 548193
Community Warden	Jackie Windard	07785 515526
Post Office in Co-op - please note that it closes at Lunchtime 1-2pm		
Closes 1 pm Wednesday and 12.30 pm Saturday		
Library: Tues & Thurs - 2pm to 6pm Saturday 9am to 1pm		

HUNNABALL

Family Funeral Services



Here **whenever** you need us

Funerals | Memorials | Pre-paid Funeral Plans

Hunnaball of Witham

1 Coach House Way, Newland Street, Witham CM8 1YJ

01376 511592

www.hunnaball.co.uk

JANET C DAVIES

Lady Funeral Directors



**Our Ladies
in Hats**

*"funerals with
a gentle touch"*

Funerals | Memorials
Pre-paid Funeral Plans

Janet C Davies of Kelvedon

233 High Street, Kelvedon CO5 9JD

01376 573691

www.hunnaball.co.uk

DRH LANDSCAPES

Est. 1987

Quality Comes 1st

**Garden Landscape and Design – Hard Landscaping – Soft Landscaping
Grounds Maintenance for Private and Commercial Premises**

- Are you planning to redesign and landscape your garden?
- Does your garden just need a little TLC or a complete makeover?
- Are you looking for assistance with regular garden maintenance or perhaps a one-off visit to get things back in order?
- Is your lawn looking tired? Would you like a new replacement lawn or artificial lawn instead?

We are a family run business with over 30 years of experience working in the ever changing world of landscape management, business regulations and horticulture, with full public and employer liability insurance, as well as being a fully registered waste carrier with the Environmental Agency.



OFFICE: 01376 514142

We welcome...



EMAIL: info@drhlandscapes.com

www.drhlandscapes.com

Harcog Centre, 77-83 Maldon Road, Witham, Essex CM8 1HP

